

Northern Lights Learning Trust

**Venerable Bede** CE Academy



# Y11 Curriculum Evening

Wednesday 9<sup>th</sup> October 2024

Northern Lights Learning Trust

**Venerable Bede** CE Academy



# Welcome

**Mrs Burgess**

(Head of School)



Heavenly Father,

Thank you for this opportunity tonight to share the journey ahead with our parents, carers and pupils .

To show them how we continue to work in collaboration, enabling our children to learn, grow and flourish; both now and in the future.

Give us the wisdom to make the right decisions this year, leading to strong, positive outcomes. Help us to open doors to post 16 education, providing them with wise and generous living.

Let us remind ourselves that we are in this together.

Lord, when times are tough, allow the holy spirit to provide us with the strength of mind and perseverance to carry on no matter what.

**In the name of the father, the son, and the holy spirit,  
Amen**

Class Of

2025





Northern Lights Learning Trust

**Venerable Bede** CE Academy



**Click for Video**

Northern Lights Learning Trust

**Venerable Bede** CE Academy



**Mrs Tracey**  
(Careers Lead)



## Post 16 Open Events

- Try to visit as many provisions as you can. Parents/carers and pupils – go to together, look and ask questions
- Taster sessions
- Plan travel routes
- Form tutors will have copies of prospectuses



## Post 16 Open Events

Open evening dates available

- Notice boards
- Tutors
- ParentMail
- Email
- Social Media

Open events have already started



## Post 16 Applications

- Year 11 pupils can apply to more than one provision, if you know what you want to do, start getting your applications in as soon as possible
- Application forms are available from post 16 open events or online
- Deadlines vary



## Careers Interviews

- All Year 11 pupils will have a one-to-one careers interview with our Careers Adviser, Debbie James
- Depending upon need, some pupils may have more than one session

Northern Lights Learning Trust

**Venerable Bede** CE Academy



**Mr Nicholson**  
(Deputy Headteacher)



## Year 11 Curriculum

All pupils follow a broad, balanced and ambitious curriculum.

- English Language
- English Literature
- Mathematics
- Science (Combined = 2 GCSEs or Triple = 3 GCSEs)
- R.E.
- Geography or History
- 3 Option subjects (chosen at the end of Y9)





## GCSEs

The following subjects are GCSE courses which are assessed solely through **terminal exams**

English Language	Combined Science	Geography
English Literature	Biology	History
Mathematics	Chemistry	Spanish
Religious Education	Physics	

These courses are graded using the 9 – 1 system



## GCSEs

The following subjects are also GCSE courses but are a mixture of terminal exam and NEA work

Art	Music
Art-Fashion	Media Studies
Food	GCSE PE
Resistant Materials	

In Music and GCSE PE, in addition to the terminal exam and the NEA work, pupils also complete a practical exam where they are judged upon their performance



## Vocational Courses

The following subjects are vocational courses which are assessed over the two years of the course through NEAs and a terminal exam

Business Studies	Health & Social Care
ICT	Travel & Tourism
Sport Science	

Vocational courses are graded using a different system to GCSEs but there are some equivalences

# Grading systems

The table below shows the different grading systems and how certain grades equate to each other

Old GCSE Grades	New GCSE Grades	Vocational Grades
	9	
A*	8	Level 2 Distinction*
A	7	Level 2 Distinction
	6	
B	5	Level 2 Merit
	4	
C	3	Level 2 Pass
	3	
	2	Level 1 Distinction
	2	
	2	Level 1 Merit
	2	
G	1	Level 1 Pass

# Upcoming Deadlines – NEAs

Subject	Unit/Component	Deadline
Business	Component 1 – Exploring Enterprises (some) Component 2 – Planning & Presenting a micro..	28th Mar 2025 24th Nov 2024
Health & Social Care	R035 – Health Promotion Campaign	29th Nov 2024 (Internal)
ICT	Component 1 – Exploring User Interface Design... Component 2 – Collecting, Presenting and ...	4th Dec 2024 28th Mar 2025
Sports Science	R181 – Applying the Principles of Training R182 – The Body'd response to Physical activity	January 2025 June 2025
Travel & Tourism	Component 1 – Travel & Tourism Organisations and Destinations (not all pupils)	15th Dec 2024 (Internal)



## Year 11 – General Information

- Pupils are over half-way through their KS4 courses
- Changes to pupils' courses cannot be made in Year 11
- Support from parents this year is vital – exams are hard and there is a lot of information to learn/revise
- Home and school, **working together** will support pupils achieve the best possible outcomes
- **Resilience** and **perseverance** are going to be key in Year 11



## Mock Exams

- Mock Exams will be conducted for all subjects during the following weeks:

**Monday 11th Nov – Wednesday 5th Dec**

- Mock exams will reflect what pupils have studied to date. They will provide a current grade and allow staff to make an informed prediction of what they might expect to achieve in the summer.
- Information regarding what will be on the exams will be provided by departments



## Mock Exams

- Pupils will be provided with a mock exam timetable. Copies will also be available around the academy and on the academy website. Parents will also receive a copy of the timetable via Parent Mail
- The mock exams mirror the summer exam series – if a pupil misses a paper this will have a significant impact upon their grade





## JCQ Regulations



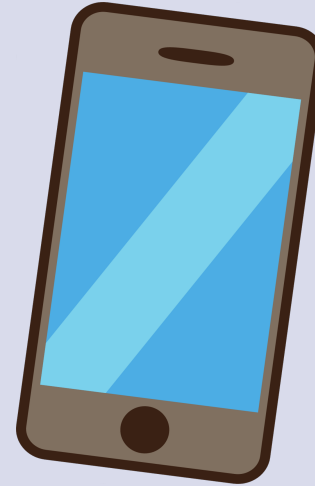
Pupils can take in water, but the bottle should not have any wrapper or graduated markings on it.



Look for bottles that are **transparent** with no other markings on. **Opaque** bottles are not acceptable.



## JCQ Regulations – Banned Items





# JCQ Regulations – Punctuality



Northern Lights Learning Trust

**Venerable Bede** CE Academy



# Intervention & Support Materials



Intervention/Pd6 Support will start on:

**Tuesday 15th October**

All pupils will be provided with their own individual timetables which run from Tuesday to Friday. Sessions are between 3.00pm and 4.00pm



# Intervention

If a pupil has **Intervention** on their support timetable, it means that they have been identified by that subject as benefitting from intensive, targeted support.

This could be to do with NEA work, or simply to provide that extra help they need to be able to achieve their full potential.

For this reason, it is **extremely important that they attend these intervention sessions**, as if they do not, they will struggle to achieve the grades that they are capable of.



## Pd6 Support

If a pupil has **Pd6 Support** on their timetable, it means that they are being invited to stay back for extra help from a subject specialist, to help them with their revision and preparation for their exams.

We would **recommend** that all pupils stay back for this support whenever possible.



## Revision Material

Revision material for all subjects can be found within our shared network within the relevant subject area of Foldr





# Attendance & Positive Attitude to Learning



# Attendance

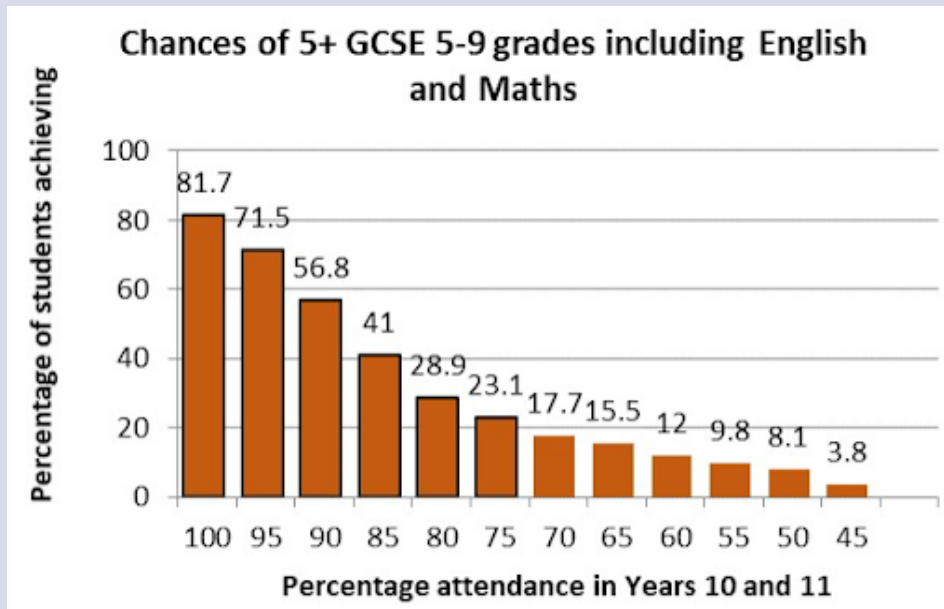
- The higher a pupil's attendance, the more they are likely to learn and the better they are likely to perform
- Every day a pupil is absent equates to 5 hours of lost learning
- 95% attendance means 50 hours of lost learning time





# Attendance

- Pupils should aim to attend school **every** day
- When this is not possible, pupils should ensure that they catch up on any work missed



**ATTEND TODAY**  
ACHIEVE TOMORROW



**ATTENDANCE WORKS**



# Positive Attitude to Learning







# Positive Attitude to Learning



Northern Lights Learning Trust

**Venerable Bede** CE Academy



# Help & Support



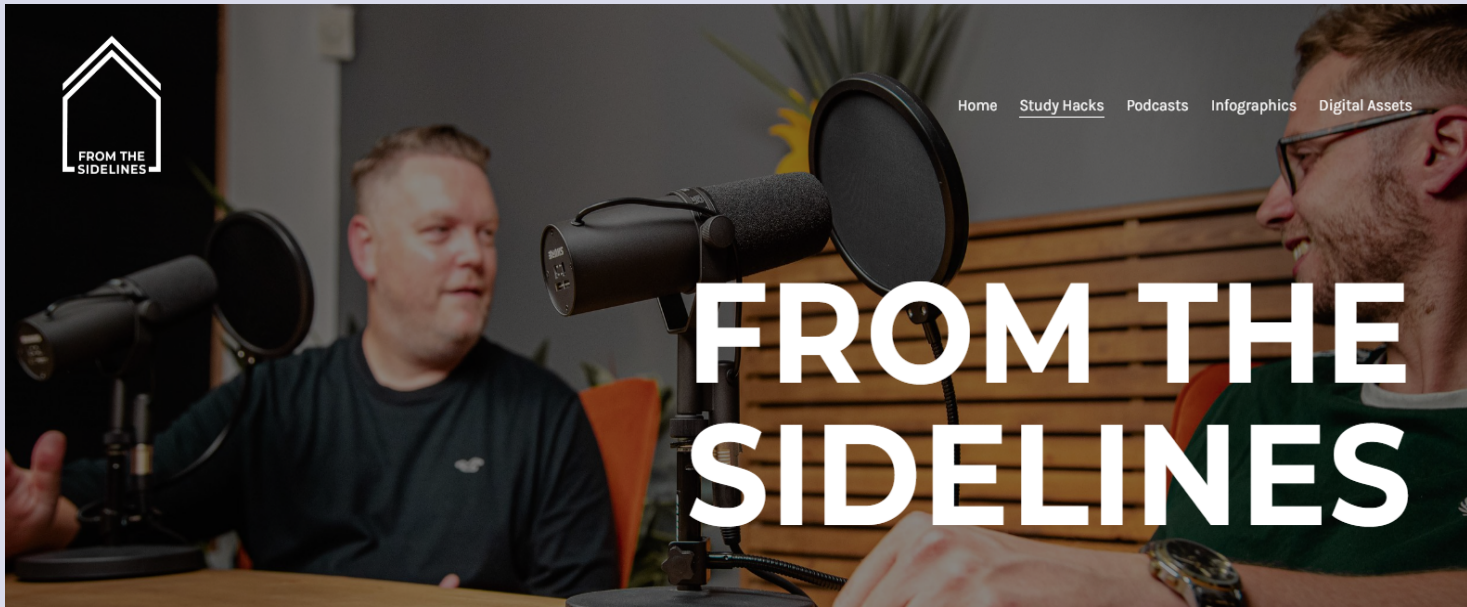
# Help & Support - Pupils

- Pastoral support through form tutors and Head of Year – Mrs Kelly
- SEND support through the SEND department – Miss Brough and Mr Nicholson
- Information and strategies for effective revision will be delivered through PD lessons
- Information and strategies for coping with stress will be delivered through PD lessons



# Help & Support – Pupils & Parents

- From the Sidelines Podcasts & Study Hacks



Click to visit